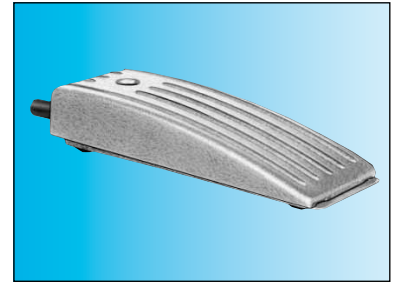


Indicators and pedal valves

Ergonomics



Also available in **ATEX** version for use in potentially explosive atmospheres in accordance with 94/9/EC Directive



Pneumatic indicators Ø 22

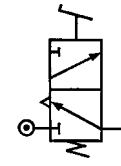
Red	84 150 201
Green	84 150 202
Yellow	84 150 203
Blue	84 150 204

—	—
—	—
—	—
—	—

Pedal valve - Version NC

81 999 501

Symbol

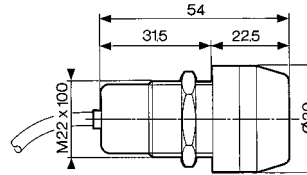


Characteristics

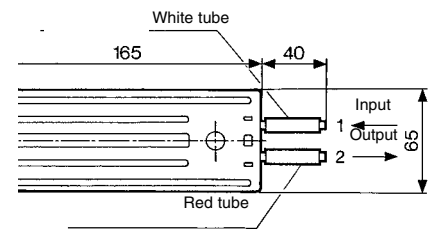
Operating pressure	bar	2 → 8	—
Push-in connection for semi-rigid tubing (NFE 49100)	mm	Ø4	Ø4
Operating temperature	°C	-5 → +50	-5 → +50
Mechanical life	operations	10 ⁷	1.5 x 10 ⁶
Weight	g	34	290

Dimensions

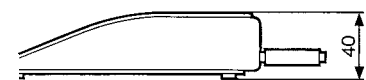
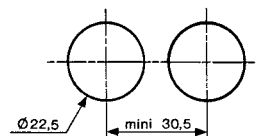
84 150 201 - 84 150 202
84 150 203 - 84 150 204



81 999 501



Holes drilled for indicators



ATEX version products are available in the following catalogues: **Pneumatic products for explosive atmospheres** or on our website www.crouzet.com