

Series 21HG - Hospital Isolation Transformers

Series 21HG - Medical Isolation Transformers are designed for installations requiring the use of an isolated, single phase power supply in nonhazardous areas of health care facilities. They feature low leakage current values of 20 to 50 microamperes demanded in hospital line isolation applications.

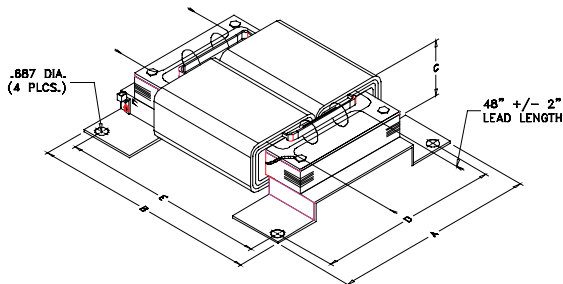
The low profile series feature "pancake" designs to fit shallow wire ways and enclosures for operating rooms and other demanding hospital environments. All Series 21HG feature electrostatic shields and convenient wire lead termination. Other terminations are available by consulting the factory or your Dongan® Representative.

Series 21HG are UL Recognized under Standards UL1047 and UL 506, File E155483.

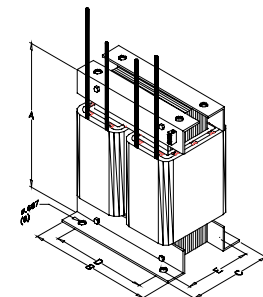
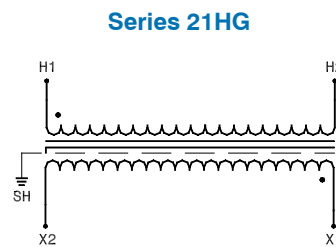
Features

- **UL Recognized, File E155483.**
- **Complies with UL Standards 506 & 1047.**
- **Core and Coil designs, 60 Hertz.**
- UL Recognized 200°C insulation system File E100887.
- Single Phase designs in sizes:
3 kVA to 15 kVA - Low Profile Style.
15 kVA to 37.5 kVA - Upright Style.
- Ground terminal and electrostatic shield provided on all units.
- All Copper windings.
- Leakage current values range from 20 to 50 microamperes depending on kVA size and secondary voltage.
- Consult factory for desired voltage combinations and kVA sizes not listed.

General Information												
Pri. Volts	120	208	240	277	277	480	Dimensions (inches)					Weight (lbs)
Sec. Volts	120	120	120	120	208	120						
	60 Hz	60 Hz	60 Hz	60 Hz	60 Hz	60 Hz	A	B	C	Mounting		
kVA Cap.	Catalog Number	Catalog Number	Catalog Number	Catalog Number	Catalog Number	Catalog Number				D	E	
Low Profile Series, Prefix 21HG												
Choose Suffix below for proper voltage / kVA combination												
3	-0313	-0301	-0305	-0302	-0308	-0304	12.50	15.00	5.00	11.25	12.75	55
5	-0513	-0501	-0505	-0502	-0508	-0504	12.50	15.00	5.00	11.25	12.75	90
7.5	-0713	-0701	-0705	-0702	-0708	-0704	14.50	17.00	5.50	13.25	15.25	100
10	-1013	-1001	-1005	-1002	-1008	-1004	14.50	17.00	7.00	13.25	15.25	135
15	-1513	-1501	-1505	-1502	-1508	-1504	14.50	17.00	7.00	13.25	15.25	145
Upright Series, Prefix 21HG												
Choose Suffix below for proper voltage / kVA combination												
15	-1513FM	-1501FM	-1505FM	-1502FM	-1508FM	-1504FM	18.00	13.00	7.50	10.00	6.25	145
25	-2513FM	-2501FM	-2505FM	-2502FM	-2508FM	-2504FM	18.00	13.00	8.75	10.00	6.88	190
37.5	-3713FM	-3701FM	-3705FM	-3702FM	-3708FM	-3704FM	18.00	13.00	10.50	10.00	8.50	290



Low Profile Series - Wall Mount



Upright Series - Floor Mount

Dimensions & weights may change. Consult factory for certified drawings.