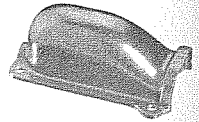


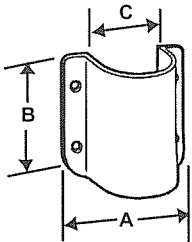
50599

TRADE SIZE	HALEX PART #	CTN/CASE QTY	CTN/CASE WT.(lbs.)	DIMENSIONS (in inches)		
				A	B	C
Service-Cable Sill Plates				ALUMINUM		
WITH 2 SCREWS						
3#4-2	50599	10	2.1	3.000	2.750	1.200
WITH 4 SCREWS						
3#1/0-2/0	50699	3	1.8	2.750	5.500	1.620
3#3/0-4/0	50799	4	3.2	2.870	6.120	1.870

Application: Outdoors Only. In conjunction with sealing compound, use to protect the service entrance cable and cover the hole where it enters the dwelling. Sill plates prevent water from entering a structure. **Material:** Copper-Free Aluminum Die-Cast **Features:** With Screws and Duct Seal



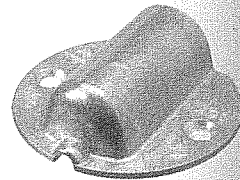
50699, 50799



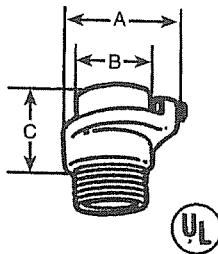
50612, 50615, 50720

Conduit Sill Plates				ALUMINUM		
WITH 2 SCREWS						
1/2"-3/4"	50507	15	2.4	2.600	2.352	0.972
1"	50610	10	4	3.000	2.542	1.175
WITH 4 SCREWS						
1 1/4"	50612	10	4	3.780	2.635	1.520
1 1/2"	50615	5	2	3.582	3.712	1.720
2"	50720	5	3	4.130	4.185	2.220

Application: Outdoors Only. In conjunction with sealing compound, use to protect EMT or service entrance cable and cover the hole where it enters the dwelling. Sill plates prevent water from entering a structure. **Material:** Copper-Free Aluminum Die-Cast **Features:** With Screws and Duct Seal

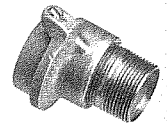


50507, 50610



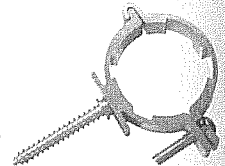
Offset Bottom Reducer Slipfitter				ALUMINUM		
2"	50920	15	7.8	2.87	2.00	1.75

Application: Indoors or Outdoors. Use to connect Rigid or IMC conduit to a metal base hub. **Material:** Aluminum Die Cast **Misc:** Furnished with 1 1/4" pipe nipple.



Conduit Supports Lag Screw Style				MALLEABLE		
2"	51320	5	1.6	2.265		
2 1/2"	51325	5	1.8	2.875		

Application: Indoors or Outdoors. Use to secure SE conduit to surface of building. **Material:** Malleable Iron



Conduit Supports 10" Bolt, Nut & Washer				MALLEABLE		
2"	33520	6	8	2.12		
2 1/2"	33525	6	8	2.50		

Application: Indoors or Outdoors. Use to secure service entrance conduit to the surface of a building. **Material:** Malleable Iron

