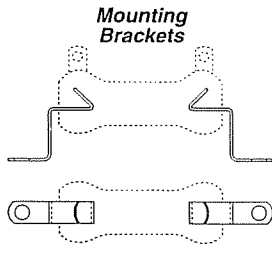
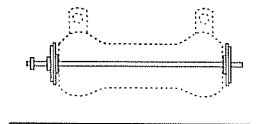


Mounting Hardware

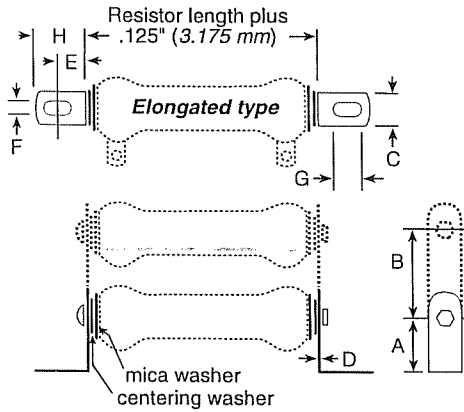
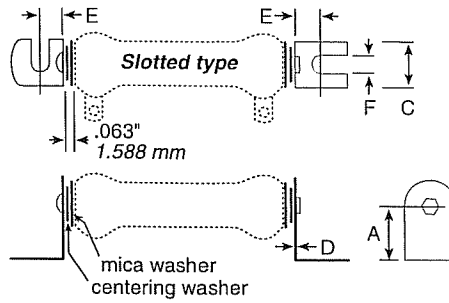
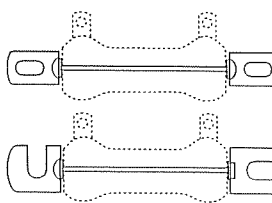
For **AR, FR** SERIES



Thru-bolts with Centering and Insulating Washers



Thru-bolts and Mounting Brackets



THRU-BOLTS AND MOUNTING BRACKETS

Sturdy plated steel brackets, along with thru-bolts, centering washers and insulating washers (included), allow for secure mounting of **AR** type and **FR** type resistors. Mounting brackets are available in either slotted (one with end-slot/one with side-slot) or elongated styles.

Type	A	B	C	Dimensions				F	G	H	Std. Core Length	Bolt Length
Slotted				D	E							
6101	0.781"	—	0.75"	0.031"	0.438"	0.25"	—	—	—	—	1 3/4"	2 1/4"
6104	0.781"	—	0.75"	0.031"	0.438"	0.25"	—	—	—	—	1 3/4"	2 1/4"
6110	1"	—	1.125"	0.063"	0.813"	0.313"	—	—	—	—	2"	2 1/2"
Elongated												
6120	1"	—	0.5"	0.031"	0.422"	0.219"	.438	.750	—	—	2 1/4"	2 3/4"
6126	1.5"	—	1.25"	0.063"	0.438"	0.281"	.563	.875	—	—	6"	6 5/8"
6127	1.5"	2"	1.25"	0.063"	0.438"	0.281"	.563	.875	—	—	6 1/2"	7"
6128	1.5"	2"	1.25"	0.063"	0.438"	0.281"	.563	.875	—	—	8 1/2"	9 1/8"
6129	1.5"	2"	1.25"	0.063"	0.438"	0.281"	.563	.875	—	—	10 1/2"	11 1/8"

ORDERING INFORMATION

Slotted				Elongated			
No. of Resistors	Bracket	Core Code	Standard Core Length (in)	No. of Resistors	Bracket	Core Code	Standard Core Length (in)
1	6101		2	1	6120		1
2	6102	K	4	2	6121	D	1 3/4
3	6103		6			H	2
						K	2 1/4
1	6104		2				4
2	6105	M	4	1	6122		2
3	6106		6 1/2	2	6123	M	4
				3	6124	N	6 1/2
1	6110A		4	4	6125		4
2	6111A	N	6				
3	6112A			1	6126		8 1/2
				2	6127		10 1/2
1	6110		8 1/2	3	6128	P	10 1/2
2	6111	P	10 1/2	4	6129		
3	6112						
1	6113B		8 1/2				
		R	10 1/2				
			11 3/4				
1	6114	S	12				
			15				
			20				

MOUNTING BRACKETS

Brackets fit inside cores of **AR, FR** type resistors and remain in place by spring tension. Standard brackets are plated steel and have no suffix to part number. Spring steel brackets are indicated with an "S" suffix following part number.

Standard Part number	Spring steel	Mtg screw size (max.)	For resistors (power ratings)
± 5	± 5S	6	8, 12 watt
✓ 7	± 7S	6	20 watt
± 9	± 9S	6	25, 50, 75 watt
± 12	± 12S	10	100 watt
± 18	± 18S	10	175, 225 watt

THRU BOLTS

Thru-Bolts, with centering mica insulating washers, permit perpendicular mounting of **AR** and **FR** type resistors to panels up to 0.25" thick.

Part No.	Bolt size Length	No.	For resistors (power rating)
± 7PA5	1.75"	8	8 watt
± 7PA10	2.5"	8	12 watt
± 7PA20	2.75"	8	20 watt
± 7PA25	2.75"	10	25 watt
± 7PA50	4.75"	10	50 watt
± 7PA75	6.75"	10	75 watt
± 7PA100	7.313"	10	100 watt
± 7PA160	9.5"	0.25"	175 watt
± 7PA200	11.5"	0.25"	225 watt

WASHERS

Metal Centering			
Part No.	Diameter Outer	Inner	For max. screw size (power ratings)
± 6000	0.563"	0.190"	#10 25, 50, 75 watt
± 6001	0.75"	0.190"	#10 100 watt
± 6003	1.125"	0.250"	0.25" 175, 225 watt

Mica Insulating

Part No.	Diameter Outer	Inner	For resistors (power ratings)
± 6010	0.75"	0.063"	25, 50, 75 watt
± 6011*	0.75"	0.313"	25, 50, 75 watt
± 6012	1"	0.063"	100 watt
✓ 6013*	1"	0.5"	100 watt
± 6014	1.25"	0.063"	core 1" O.D. x 0.625" I.D.
± 6015*	1.25"	0.625"	core 1" O.D. x 0.625" I.D.
✓ 6016	1.5"	0.063"	175, 225 watt
± 6017*	1.5"	0.75"	175, 225 watt

* Use with centering washers.

ADJUSTABLE LUGS FOR 210 SERIES

One standard screwdriver type adjustable lug is supplied with each unit.

Two types of lugs can be ordered separately: standard or with a silver contact button; both types are available with a screwdriver type lug.

Resistor core diam. (in. / mm)	Standard part numbers	Silver
0.313 / 7.94	± 2115	± 2116
0.563 / 14.3	± 2121	✓ 2123
0.750 / 19.05	± 2125	± 2127
1.125 / 28.58	✓ 2133	± 2135

Double thumb screw Lug

(Part Number 2160) The double thumb screw adjustable lug permits easier adjustment and less chance of damage to resistance wire. Available for 1.125" cores only.

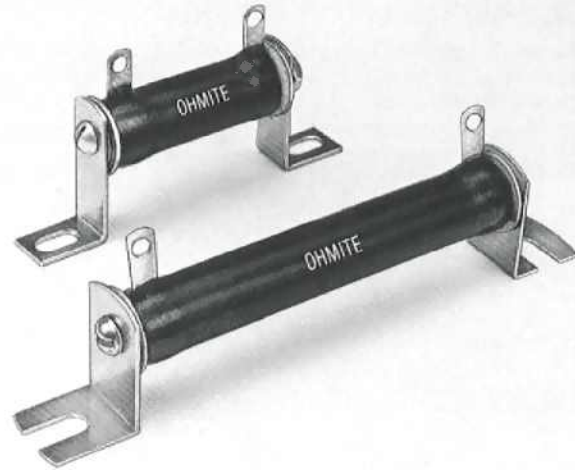
± = Most popular Standard values

✓ = Standard values

± = Non-Standard values subject to minimum handling charge per item

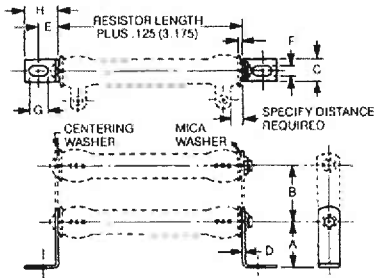
Through-Bolt Type "Dead" Mounting Brackets

Through-bolt mounting brackets are recommended for mounting applications where a sturdier type of mounting is required instead of the standard spring grip mounting brackets. Two types of brackets are available, the "end-slot and side slot" pair for quick mounting and the elongated hole type. Resistors are mounted on the brackets by means of through-bolts, centering washers and mica washers. Special brackets are available to meet military standards MS75009 and High Shock specification MIL-R-15109.



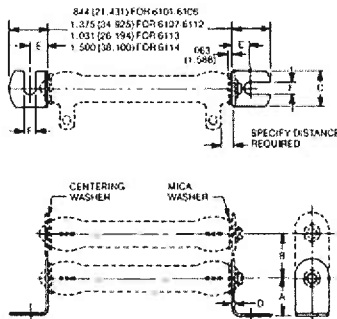
Resistors must be derated when two or more resistors are stack mounted. See page 4 of Resistor Selection Application Notes.

Through-bolt Type Mounting Brackets—Elongated Holes



Cat. No. Pair of Brackets Only	Cat. No. Brackets and Bolts	No. of Resistors	Resistor Core O.D. & Core Code		Dimensions				Standard Core Lengths	
			In.	MM	In.	MM	In.	MM		
6120	Add Core Dia. Letter and Resistor Length (Standard or Special) to Cat. No. as a Suffix. Example: Cat. No. 6121-K4.	1	D: .313	7.938	A: 1.000	25.400	B: 1.125	3.175	1.75", 2", 4"	
6121		2	H: .438	11.113	C: .500	12.700	D: .031	.794	6"	
				K: .563	14.288	E: .422	10.716	F: .219	5.556	
6122		1	M: .750	19.050	A: 1.250	31.750	B: 1.625	41.275	2", 4", 6.5"	
6123		2	N: 1.000	25.400	C: .750	19.050	D: .031	.794		
6124		3			E: .422	10.716	F: .219	5.556		
6125		4			G: .438	11.113	H: .750	19.050		
6126		1	P: 1.125	3.175	A: 1.500	38.100	B: 2.000	50.800	2", 6", 6.5"	
6127		2			C: 1.250	31.750	D: .063	1.588	8.5", 10.5"	
6128		3			E: .438	11.113	F: .281	7.144		
6129	4			G: .563	14.288	H: .875	22.225			

Through-bolt Type Mounting Brackets—Slotted



Cat. No. Pair of Brackets Only	Cat. No. Brackets and Bolts	No. of Resistors	Resistor Core O.D. & Core Code		Dimensions				Standard Core Lengths
			In.	MM	In.	MM	In.	MM	
6101	Add Core Dia. Letter and Resistor Length (Standard or Special) to Cat. No. as a Suffix. Example: Cat. No. 6105-M6.5	1	K: .563	14.288	A: .781	19.844	B: .938	23.813	2", 4", 6"
6102		2			C: .750	19.050	D: .031*	.794	
6103		3			E: .438	11.113	F: .250	6.350	
6104		1	M: .750	19.050	A: .781	19.844	B: 1.125	28.573	2", 4", 6.5"
6105		2			C: .750	19.050	D: .031*	.794	
6106		3			E: .438	11.113	F: .250	6.350	
6110A		1	N: 1.000	25.400	A: 1.000	25.400	B: 1.750	44.450	4", 6"
6111A		2			C: 1.125	28.575	D: .063	1.588	
6112A		3			E: .813	20.241	F: .313	7.938	
6110		1	P: 1.125	28.575	A: 1.000	25.400	B: 1.750	44.450	2", 6", 6.5"
6111		2			C: 1.125	28.575	D: .063	1.588	8.5", 10.5"
6112		3			E: .813	20.241	F: .313	7.938	
6113		1	P: 1.125	28.575	A: 1.562	34.688	B: . . .		2", 6", 6.5"
6113A		1	Q: 1.500	38.100	C: 1.250	31.750	D: .063	1.588	8.5", 10.5"
6113B		1	R: 1.625	41.275	E: .438	11.113	F: .375	9.525	
†6114		1	S: 2.500	63.500	A: 2.750	69.850	B: . . .		6", 12", 15", 20"
				C: 2.500	63.500	D: .063	1.588		
				E: 1.000	25.400	F: .375	9.525		

*D = .047 (1.191) on brackets for 2 or 3 resistors.

†Both brackets have end slots and integral centering device, consisting of 3 projections.