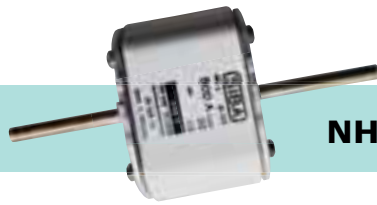
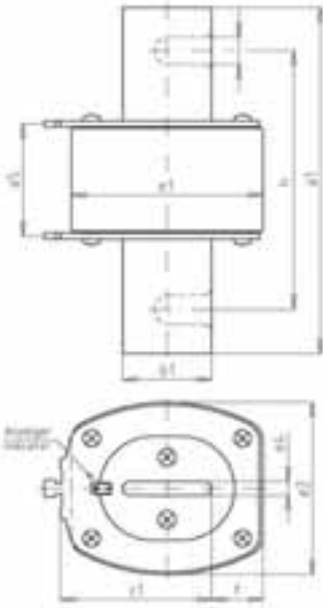


690 V



NH 4 / NH 4a



Spannungsführende Griffflaschen / Non insulated removal tags

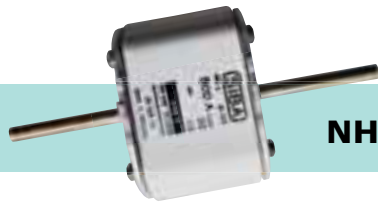
Verpackung / Packing 1 Stück / 1 piece

Betriebsklasse / Class
aM

IEC 60269-2
VDE 0636 Teil 2

Bemes- sungs- spannung Rated Voltage	Artikel Article	Größe Size	Bemes- sungs- strom Rated Current	Länge Length									
				a ₅	a ₁	b ₁	e ₄	e ₁	e ₂	f	c ₁	h	i
V			I _n / A	mm	mm	mm	mm	mm	mm	mm	mm	mm	mm
690	20 225 08	NH 4	400 - 1000	65	200	50	8	110	102	29	87	150	16
	20 227 08	NH 4a	400 - 1000	87	200	50	6	110	102	28	87	-	-

Bemessungsstrom Rated Current	Artikel Nr. / Leistungsabgabe Article No. / Power Loss				Gewicht Weight	Bemessungs- ausschaltvermögen Rated Breaking Capacity	Schmelz- integral Pre-Arcing- i ² t-Value	Ausschaltintegral Total i ² t-Value		
	NH 4		NH 4a					@ AC 254 V	@ AC 440 V	@ AC 500 V
I _n / A		W		W	kg/1	kA	A ² s	A ² s	A ² s	A ² s
400	20 225 08.400	31	20 227 08.400	34	2,25/2,63	120	623.000	1.030.000	1.246.000	1.680.000
500	20 225 08.500	40	20 227 08.500	44	2,25/2,63	120	829.000	1.370.000	1.658.000	2.240.000
630	20 225 08.630	48	20 227 08.630	53	2,25/2,63	120	1.470.000	2.425.000	3.940.000	3.970.000
800	20 225 08.800	58	20 227 08.800	64	2,25/2,63	120	2.780.000	4.590.000	5.560.000	7.510.000
1000	20 225 08.1000	71	20 227 08.1000	78	2,25/2,63	120	4.510.000	7.460.000	9.020.000	12.200.000

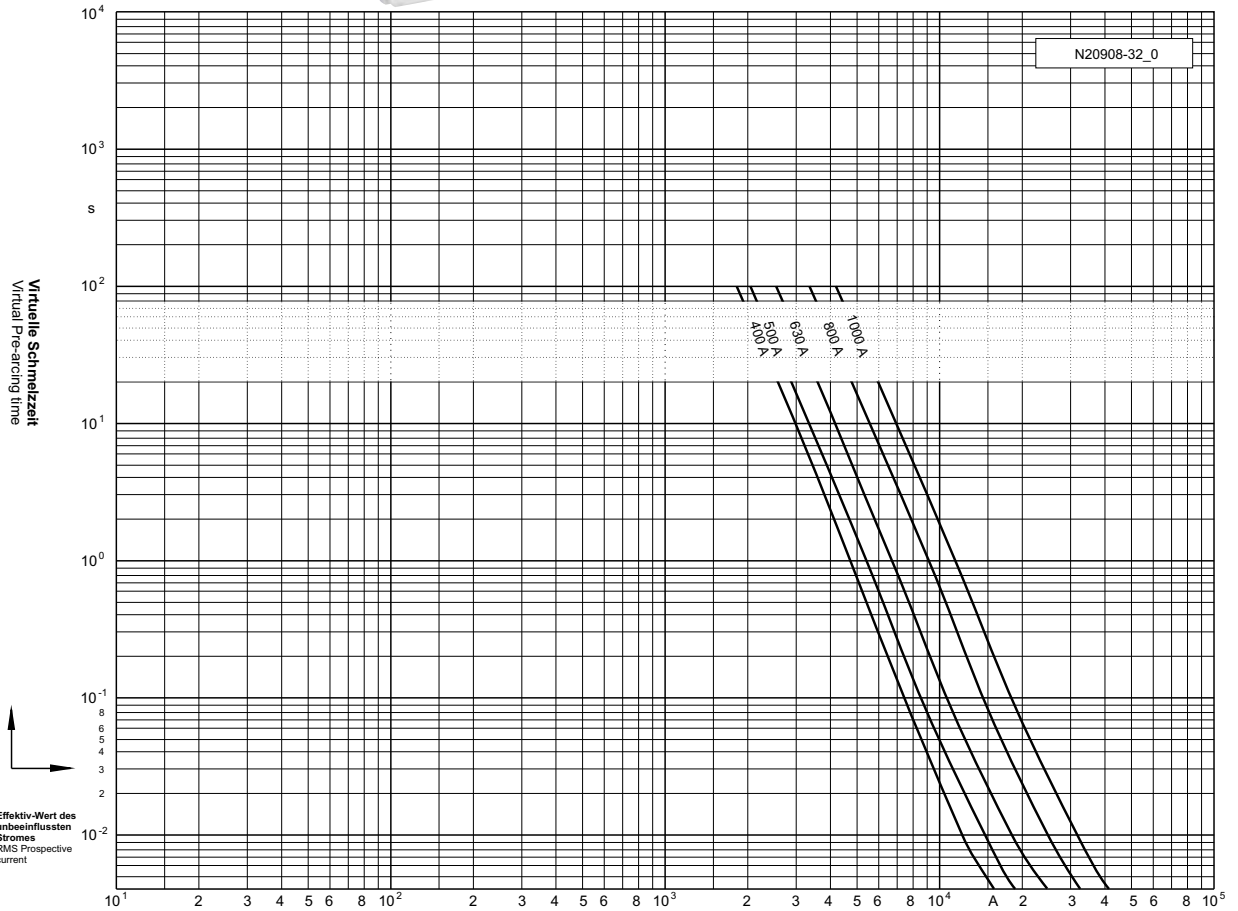


690 V

NH 4 / NH 4a

aM

Zeit/Strom-
Kennlinien
Time-current
characteristics



Durchlass-Strom
Cut-off current

