

## Accessories

### Mounting Methods, Terminals, Varistors, Cover and Marker

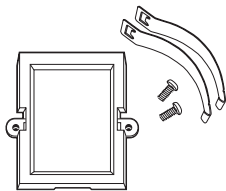
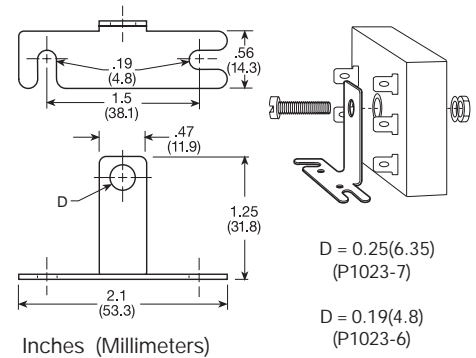


#### Mini-Mount/Standard Mount Bracket

##### Description

Provides a convenient method of mounting 2 x 2 x 1.21 in. (50.8 x 50.8 x 30.7 mm) or 2 x 3 x 1.5 in. (50.8 x 76.2 x 38.1 mm) modules. The 90° orientation of mounting slots makes installation/removal of modules quick and easy. The P1023-6 secures to module with a #8 (M4 x 0.7) screw. The P1023-7 secures to 2 x 2 x 1.21 in. (50.8 x 50.8 x 30.7 mm) module with Mini-Pot for local adjustment. Made from steel with a cadmium surface finish.

Mounting Method	Mounting Hole Size	P/N
#8 (M4 x 0.7) screw	0.19 in. (4.8 mm)	P1023-6
Mini-Pot	0.25 in (6.35 mm)	P1023-7

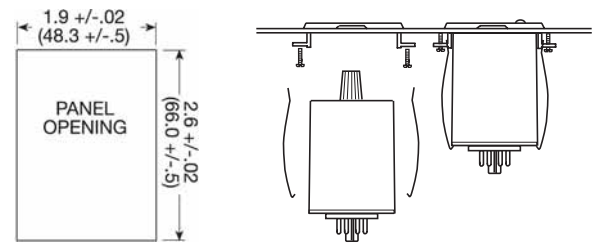


#### Front Panel Mount Kit

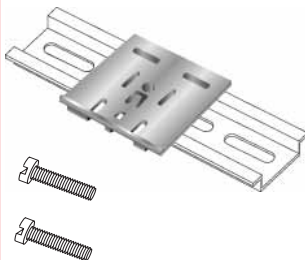
##### Description

Provides an easy method of through-the-panel mounting of 8 or 11 pin plug-in timers, flashers, and other controls. May be mounted in panels up to 0.125 in. (3.2 mm) thick. Includes two clamps and two screws.

P/N: BZ1



Illustrates panel opening size required to mount BZ1.

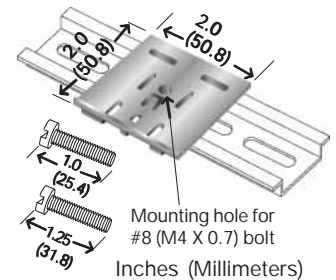


#### DIN Rail Mount Adaptor

##### Description

Allows any 2 x 2 in. (50.8 x 50.8 mm) or 2 x 3 in. (50.8 x 76.2 mm) module to be mounted on a 35 mm DIN type rail. Comes complete with mounting hardware for 0.75 in. (19 mm) and 1 in. (25.4 mm) thick modules.

P/N: P1023-20



Mounting hole for #8 (M4 X 0.7) bolt

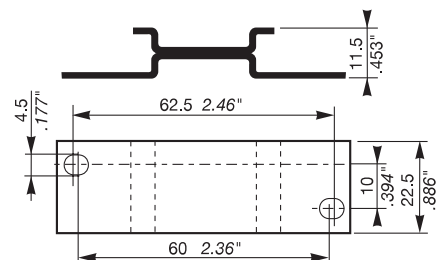


#### Back Panel Mount Adaptor

##### Description

Provides a method for mounting 35 mm DIN 3 mounting timers and controls on the equipment's enclosure or back panel. Mount with two #6 (M3.5 x 0.6) screws.

P/N: 1SVR 430 029 R 0100



12



#### Heat Sink Compound

##### Description

Bulk heat sink compound sufficient to mount over 50 high current, plated 2" x 2" (50.8 x 50.8 mm) timers or flashers. Contains approximately 100 grams.

P/N: P0200-20

## Accessories

### Mounting Methods, Terminals, Varistors, Cover and Marker

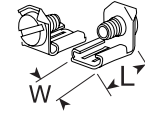


### Quick Connect Screw Adaptor

#### Description

Screw adaptor terminal designed for use with all modules with 0.25 in. (6.35 mm) male quick connect terminals. Screw terminal accepts ring or spade terminals.

**P/N:** P1015-18



L = 0.55 (41.0)  
W = 0.32 (8.1)  
Inches (Millimeters)

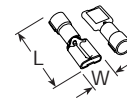


### Female Quick Connect Terminals

#### Description

These 0.25 in. (6.35 mm) female terminals are constructed with an insulator barrel to provide strain relief.

Part Number	Wire Size
P1015-13	AWG 10/12 (5.3/3.2 mm <sup>2</sup> )
P1015-64	AWG 14/16 (2.5/1.3 mm <sup>2</sup> )
P1015-14	AWG 18/22 (0.93/0.33 mm <sup>2</sup> )



L = 0.83 (21.1)  
W = 0.3 (7.6)  
Inches (Millimeters)



### Metal Oxide Varistors

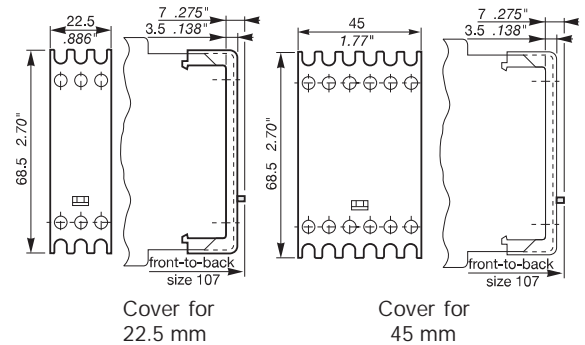
P/N	Max. Operating Voltage		Max Impulse Current 80/20 us current wave (A)	Varistor Voltage at 1 mA DC Test Current		Peak Clamping Voltage with 80 us wave		Capacitance (pF)	Size (mm)
	DC (V)	AC (V)		Min.(V)	Max.(V)	Vc (V)	Ip (A)		
P1012-27	200	150	1200	212	268	395	10	150	7
P1012-25	200	150	4500	212	268	395	50	800	14
P1012-3	369	275	1200	389	515	775	10	85	7
P1012-6	369	275	4500	389	475	710	50	450	14

### Sealable Transparent Cover

#### Description

Protection against unauthorized adjustments of 22.5 mm and 45 mm IEC type timers and controls.

Part Number	Cover Size
1SVR 430 005 R 0100	22.5 mm
1SVR 440 005 R 0100	45 mm



### Marker Insert

#### Description

Replacement unit marker insert for use with 22.5 mm and 45 mm IEC timers and controls that include replaceable markers.

**P/N:** 1SVR 366 017 R 0100

